

The background of the image is a dense, repeating pattern of various tropical leaves in shades of green. The leaves include large, deeply lobed monstera leaves and long, feathery palm fronds. The pattern is layered, with some leaves appearing more prominent than others, creating a sense of depth and texture. The overall color palette is a range of greens, from light sage to a slightly darker forest green.

CT

CALIFORNIA TAN®



Cýphêr®

Titanium [22] Complex contains distinct ingredients that work with UVA and UVB rays individually to obtain maximum tanning benefits

D-Cýphêr Complex helps build deeper, darker color by unlocking the proteins essential to boosting the production of melanin

Youth Boost is a scientific blend of ultra ingredients that address the signs of aging by working to help reduce the appearance of fine lines and wrinkles and improve skin elasticity to reveal a youthful complexion

Cell Speak uses an age-defying code that supports optimum skin rejuvenation allowing for radiant skin



Cýphêr® Hybrid Facial

Base Tan Builder combines Tyrosine and a Melanin Activated Peptide (MAP) to develop a natural, golden glow

Red Light Results delivers Hydrolyzed Collagen and Peptides assist in collagen and elastin production, especially when used in conjunction with Red Light Treatment, while keeping skin hydrated for longer-lasting results

Youth Renewal Fusion is an enhanced blend, including Hyaluronic Acid, that delivers overall skin improvement by reducing the appearance of fine lines and wrinkles, reducing skin flakiness, increasing moisturization, improving skin clarity, assisting in ceramide production, and improving barrier function

Niacinamide: Helps greatly improve skin moisturization, skin barrier integrity, and is known to help increase collagen production.

Youth Boost is a scientific blend of ultra ingredients that address the signs of aging by working to help reduce the appearance of fine lines and wrinkles and improve skin elasticity to reveal a youthful complexion

Hypoallergenic & Non-Comedogenic, No Added Dyes or Silicones



WGSN + Coloro Key Colors Autumn/Winter 2023/24

Color of the Year

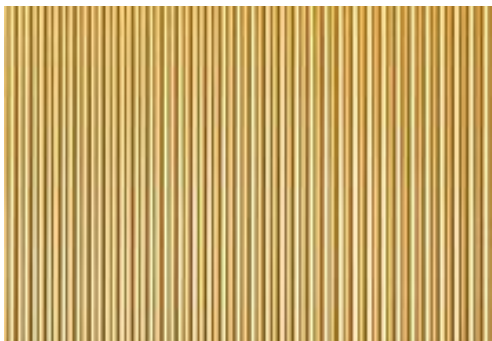
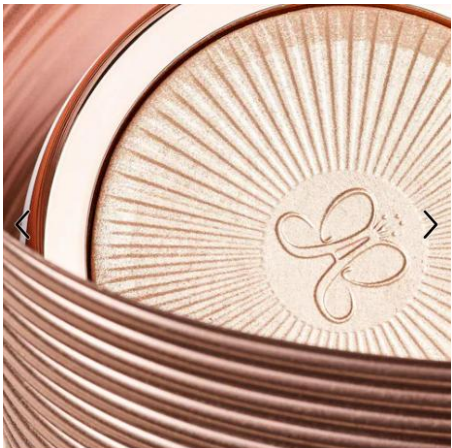
Digital Lavender
Coloro 134-67-16

Astro Dust
Coloro 010-42-20

Galactic Cobalt
Coloro 125-28-32

Sage Leaf
Coloro 072-45-06

Apricot Crush
Coloro 024-65-27



Tekton Upgraded



CALIFORNIA TAN®

Tekton™ Intensifier

Tektōnic Technology® helps renew skin for a more youthful look

BronzeActiv® turmeric that is Infused with Black Pepper and aims to naturally promote flawless color development inside and outside of the tanning bed

Youth Boosting Peptide helps stimulates collagen synthesis for smoother, younger-looking skin

A **Cooling Essence** refreshes skin and helps inhibit after tanning odor

Vitatan® contains an exclusive boosted combination of vitamins, minerals, antioxidants, oxygen and energy to accelerate color development and build a faster base tan

Dual Peptide System is an age defying blend inspired but skin's natural skin regeneration and is known to help with the appearance of fine lines and wrinkles

Fragrance: Sensual Citrus – Citrus, Water Lily & Amber



Tekton™ Hybrid Natural Bronzer

BronzeActiv® turmeric that is Infused with **Black Pepper** and aims to naturally promote flawless color development inside and outside of the tanning bed

CuO2® and **TRF™** utilize Copper and Oxygen to darken the tan

Natural Bronzers mix of Caramel and Annatto to provide immediate color results

Tektōnic Technology® revitalizes the skin while shielding it from environmental pollutants

Cocoa Extract conditions the skin and protects against free radicals while promoting a toning effect to skin

Hybrid Enhance utilizes hydrating and pH Balancing ingredients designated to boost collagen production and **Wellness Light** benefits

Marine Enzyme is a light activated enzyme that helps protect the skin's barrier

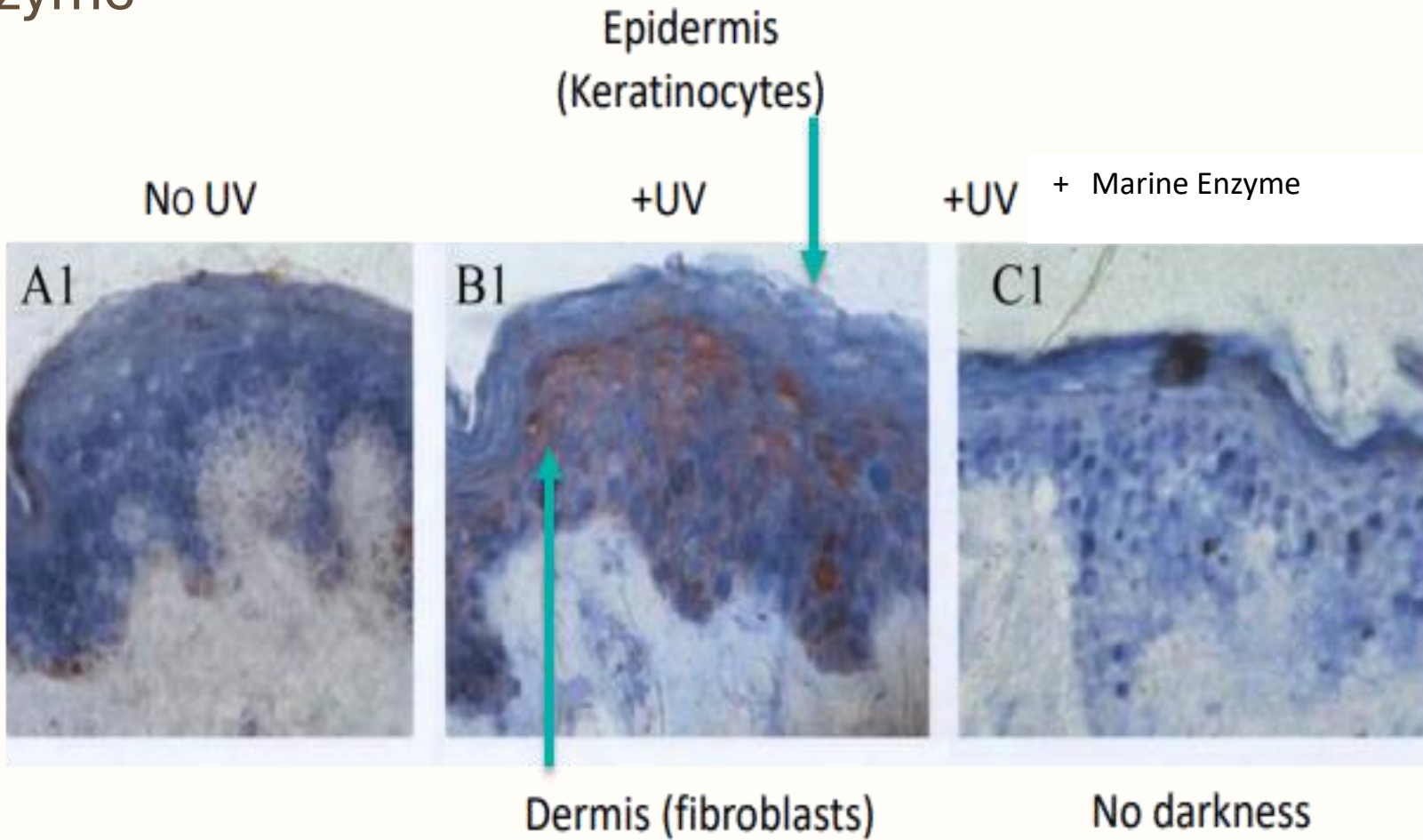
Dual Peptide System is an age defying blend inspired but skin's natural skin regeneration and is known to help with the appearance of fine lines and wrinkles

Fragrance: Sensual Citrus – Citrus, Water Lily & Amber



Tekton™ Hybrid Natural Bronzer

Marine Enzyme



Tekton™ DHA Optimizer

BronzeActiv® turmeric that is Infused with **Black Pepper** and aims to naturally promote flawless color development inside and outside of the tanning bed

CuO2® and **TRF™** utilize Copper and Oxygen to darken the tan

CT 3D delivers shades of Caramel and DHA for multi-dimensional color results

Tektōnic Technology® revitalizes the skin while shielding it from environmental pollutants

Cocoa Extract conditions the skin and protects against free radicals while promoting a toning

Dual Peptide System is an age defying blend inspired but skin's natural skin regeneration and is known to help with the appearance of fine lines and wrinkles

Fragrance: Sensual Citrus – Citrus, Water Lily & Amber



Tekton™ Hybrid Face

BronzeActiv® turmeric that is Infused with **Black Pepper** and aims to naturally promote flawless color development inside and outside of the tanning bed

CuO2® and **TRF™** utilize Copper and Oxygen to darken the tan

CT 3D delivers shades of Caramel and DHA for **multi-dimensional color results**

Tektōnic Technology® revitalizes the skin while shielding it from environmental pollutants

Cocoa Extract conditions the skin and protects against free radicals while promoting a toning effect to skin

Hybrid Enhance utilizes hydrating and pH Balancing ingredients designated to boost collagen production and Wellness Light benefits

Dual Peptide System is an age defying blend inspired but skin's natural skin regeneration and is known to help with the appearance of fine lines and wrinkles

Fragrance: Sensual Citrus – Citrus, Water Lily & Amber





CANOPY
Lane



CALIFORNIA TAN®

Canopy Lane™ Intensifier

Plant Stem Cell Technology: Sustainably sourced, it helps fight against pollution damage to the skin

Blue Light Protection: Leave skin feeling soft, silky and pure, a blend known to counteract the harmful effects of blue light over-exposure

Rainforest Hydration: This unique combination includes a bioactive complex, derived from Rainforest Fruits, nourishes for healthy skin and helps fight the aging process

Zinc: Assists in restoring and soothing skin

Vitatan®: Build beautiful color with this combination of vitamins, minerals and antioxidants to accelerate color development

Fragrance: Tropical Isle



CALIFORNIA TAN®

Canopy Lane™ Optimizer

Canopy Bronzing Complex: Uses instant bronzers with beautiful violet undertones and DHA to help break through your tanning plateau

CuO2® and TRF™: Uses ingredients that promote Copper and Oxygen for amplified color development

Plant Stem Cell Technology: Sustainably sourced, it helps fight against pollution damage to the skin

Blue Light Protection: Leave skin feeling soft, silky and pure, a blend known to counteract the harmful effects of blue light over-exposure

Rainforest Hydration: This unique combination includes a bioactive complex, derived from Rainforest Fruits, nourishes for healthy skin and helps fight the aging process

Magnesium: Helps keep skin hydrated and healthy

Fragrance: Citrus Sunset



CALIFORNIA TAN®

The background of the image is a dense, repeating pattern of various tropical leaves in shades of green. The leaves include large, deeply lobed monstera leaves and long, feathery palm fronds. The pattern is layered, with some leaves appearing more prominent than others, creating a sense of depth and a lush, jungle-like atmosphere.

CT

CALIFORNIA TAN®



CALIFORNIA TAN® SAUNA BOOSTER





BODY BY GT

Refresh your skin, mind, and body.

REFRESHING MIST
Aqua-Infused Tonic, Dehydrated
CALIFORNIA TAN®
8.45 FL. OZ. (247 mL)

SESSION ENHANCER
Aqua-Infused Tonic, Dehydrated
CALIFORNIA TAN®
4.23 FL. OZ. (125 mL)

DEEPENING MOISTURIZER
Aqua-Infused Tonic, Dehydrated
CALIFORNIA TAN®
1.7 FL. OZ. (50 mL)

* Graphics are subject to change

CALIFORNIA TAN®

Body by CT™

- **Color Enhancement:** Formulated with a unique combination of ingredients to promote Melanin synthesis, provide more oxygen to the skin and help enhance the tanning process
- **Sculpt & Tone:** A synergistic toning complex that is known to boost the effectiveness of Caffeine helping to smooth textured skin, reduce body imperfections, and encourage collagen synthesis for a more toned appearance
- **Refined Moisture:** Hydrolyzed Collagen combines with Aloe delivering high amounts of moisture to the skin to renew and rejuvenate
- **Activate & Amplify:** Technology with a mild warming sensation that is specially designed to help transport active ingredients faster and further into the skin for increased effectiveness
- **D-Tox:** Charcoal Extract is used for its detoxifying properties to refresh and clarify without stripping the skin's natural moisture

Fragrance: Luminous Waters



* Graphics are subject to change

CALIFORNIA TAN®

Body by CT™ Mist

Color Extend with this refreshing spray that increases oxygen and heightens the effects of wellness and tanning sessions

Artic Microalga helps tone skin and reduce wrinkles for a youthful look

Active Enhancer actively seals results while giving the skin a cooling sensation for the best post-session glow

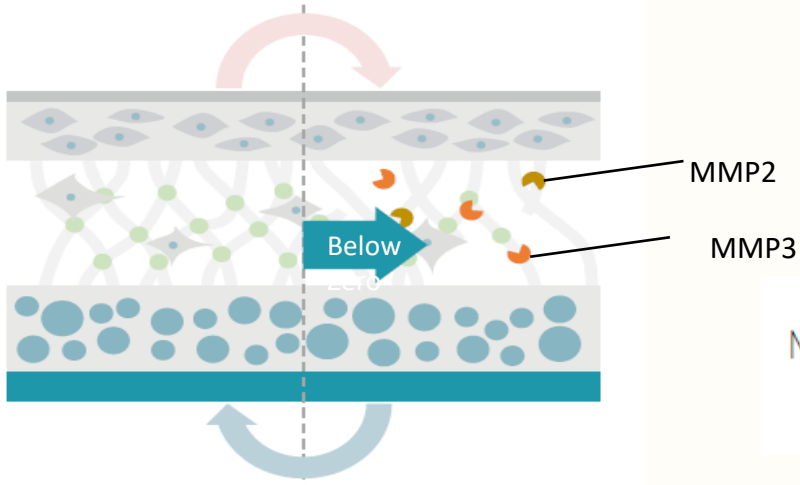
Refined Moisture contains Hydrolyzed Collagen which is known for its age-defying properties for a timeless complexion. Additionally, Aloe renews and rejuvenates

Electrolyte Infusion is formulated to help refresh skin with electrolytes lost from sweating to keep skin well-hydrated

Fragrance: Luminous Waters – Fresh Floral, Lavender & Ocean Water



Body by CT™ Below Zero & Arctic Microalga



Below Zero reduces the activity of MMP2 and MMP3, restoring the skins natural balance

MMP2 breaks down collagen IV, collagens V, VII and X, elastin and other skin components. MMP3 is involved in the degradation of collagens II, III, IV, IX, and X, but also laminin, fibronectin and elastin.

Body by CT™ Moisturizer

Color Extend with age defying moisturizer that increases oxygen and heightens the effects of wellness and tanning sessions

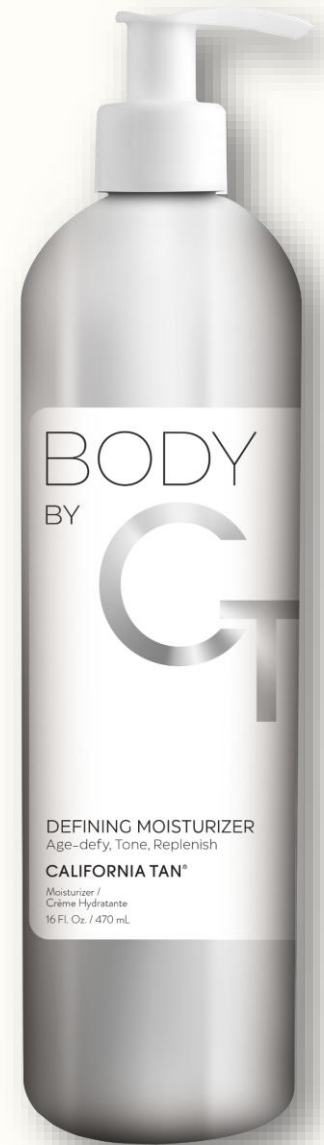
Artic Microalga helps tone skin and reduce wrinkles for a youthful look

Sculpt & Tone is known to boost the effectiveness of Caffeine, smooth textured skin, reduce body imperfections and encourage collagen synthesis for a more toned appearance

Refined Moisture contains **Hydrolyzed Collagen** which is known for its age-defying properties for a timeless complexion. Additionally, Aloe renews and rejuvenates

Body Fit combines Vitamin A and Niacinamide to aid in smoothing texture, evening and brightening skin tone and improving hydration and dull skin

Fragrance: Luminous Waters – Fresh Floral, Lavender & Ocean Water



Body by CT™ Wellness Routine



CALIFORNIA TAN®

CALIFORNIA TAN®

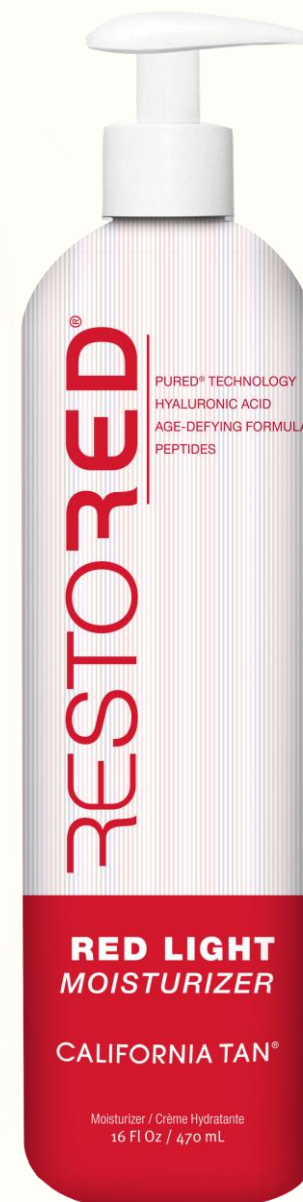
RESTORED®

RESTORED®
RED LIGHT
POST CREAM
CALIFORNIA TAN®
Post-Tan Cream (Light to Medium Tan)

RESTORED®
RED LIGHT
2-IN-1 INTENSIFIER
CALIFORNIA TAN®
Purified Technology: Hyaluronic Acid, Aloe-Based, Vitamin C
Net Wt. 5.6 Oz / 158 g

RESTORED®
RED LIGHT
PREP SPRAY
CALIFORNIA TAN®
Purified Technology: Hyaluronic Acid, Aloe-Based, Green Tea
Net Wt. 5.6 Oz / 158 g

RESTORED®
RED LIGHT
MOISTURIZER
CALIFORNIA TAN®
Purified Technology: Hyaluronic Acid, Aloe-Based Formula, Peptides
Net Wt. 16.9 Oz / 479 mL



CALIFORNIA TAN®



Pu[red]® Technology	Aloe Vera	Vitamin C	Hyaluronic Acid	CT-Protect™	Argireline Peptide	Renovage™ Age Reversing Technology	Argan Oil	Shea Butter & Vitamin E	Pro-Vitamin B5	Vitatan®
